



Aleh Ramla Medical Rehabilitation Center

Introducing innovative high standard
medical and rehabilitation services to
Israel's diverse population with disabilities
from low socio-economic status



Creating Hope for 40 Years

Aleh, the National Network for the Care and Advancement of Children and Adults with Disabilities, is a non-profit organization founded in 1982 in order to provide high quality professional medical care, rehabilitation and a warm loving home for people with severe developmental mental disabilities and challenging medical complexities.

Being at the forefront of a nationwide network, Aleh specializes, advances and treats various disabilities, from autism, Down's Syndrome and Cerebral Palsy to severe medical disorders.

Aleh has also made a breakthrough in raising awareness and treatment given to disabled people in Israel, and over the years has even initiated legislation changes as well as setting up projects and institutes for the betterment of this population.





Aleh Centers

Bet Yahalom, B'nei Brak

Bet Yahalom is comprised of a housing complex for children and adults with disabilities, including a special education school, a complex nursing department for the disabled, a community clinic, a day care center for adults and a rehabilitation pool.

Aleh Moria Housing Complex, Gedera

A housing complex for children and adults with disabilities, a special education school, a day care center for adults and housing for children with autism.



Bet Chayil, Aleh Central Campus

The new campus that was set up in northern B'nei Brak includes special education schools and kindergartens, Eshkol rehabilitation day care centers, a day care center for adults, a dentist clinic, a physical fitness and sport center tailored for young children, an impressive hydrotherapy center and an advanced rehabilitation pool.



Additional Aleh Network Centers

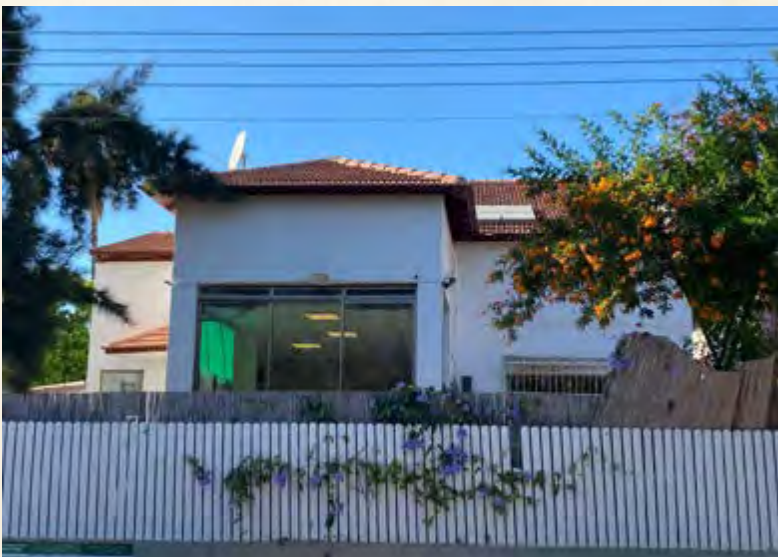
Ali Program, Givat Washington



Alalim Rehabilitation Day Care Center, Kibbutz Hafetz Haim



Housing and Integration in the Community, Gedera



Housing and Integration in the Community, B'nei Ra'am





Innovation and Originality

With four decades of experience, the Aleh Network is today considered a leading institute in Israel and around the world in the realm of treatment, rehabilitation, advancement and enhanced quality of life for children and adults with complex and diverse disabilities, using a variety of original tools and groundbreaking innovation.

The Need

One of the great difficulties that parents of children with disabilities currently experience is the need to travel from place to place in order to receive the full range of services required, from medical services to education and cognitive enrichment services.



The Vision

The establishment of an innovative and state-of-the-art Aleh Medical Rehabilitation Center for children and adults with disabilities in the center of Ramla, which will provide professional medical services and optimal healthcare solutions for the entire disabled population, regardless of religion, race and gender.





Aleh Ramla Medical Rehabilitation Center

The Aleh Medical Rehabilitation Center comprises fifteen floors on a 236,806 square feet (22,000 square meter) site and will provide 450 beds and full holistic treatment under one roof for children and adults with disabilities.

The Center will be built according to the highest standard and will include the most updated medical equipment.

The Need for the Aleh Ramla Medical Rehabilitation Center

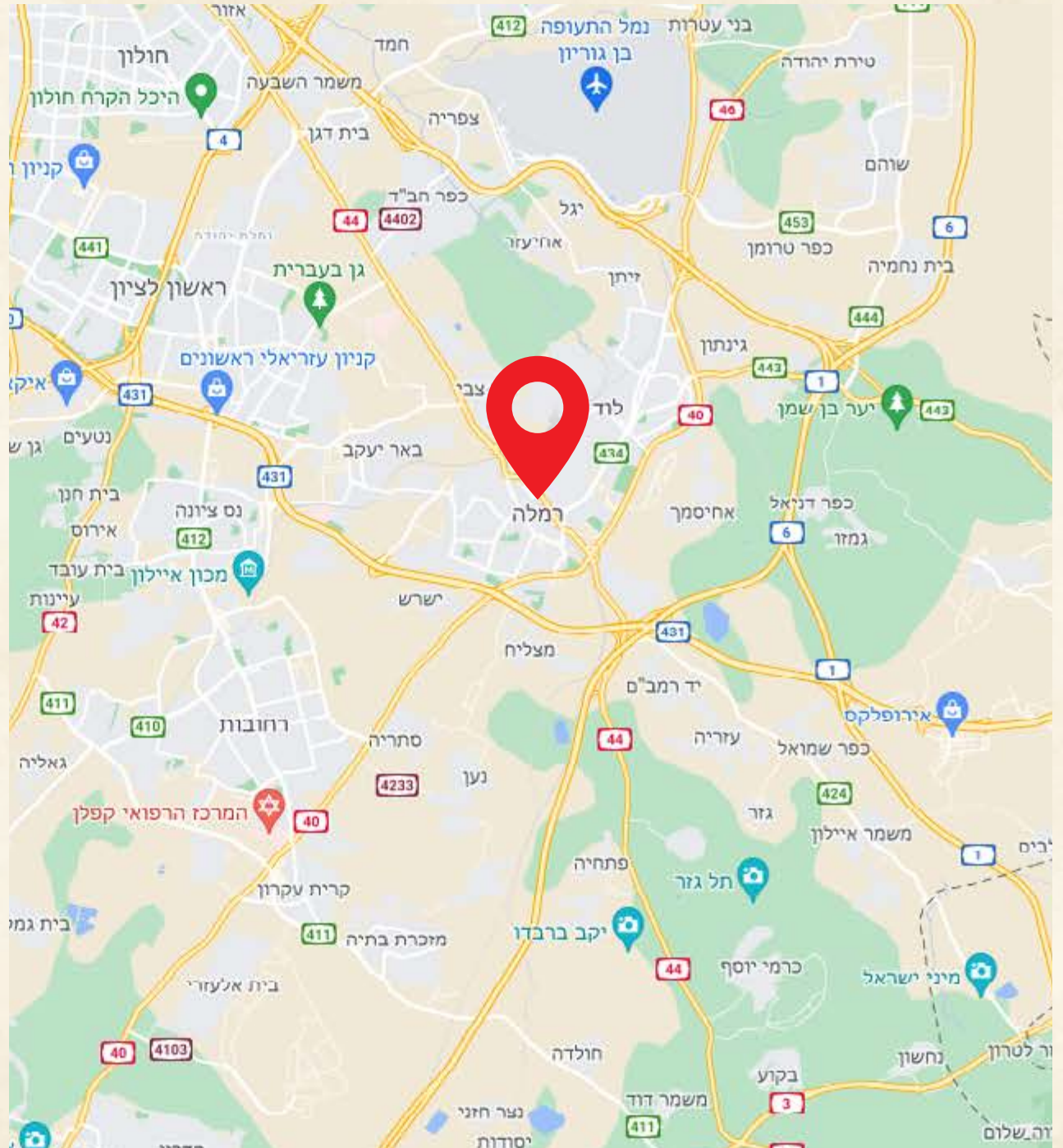
The choice of Ramla as the location for the construction of the new Center is the great need for these services in this city in addition to being a regional center for all the surrounding localities.

Ramla is a city in central Israel and out of the total population there are about 8,300 recipients of benefits for disabled children as well as nursing and general disability benefits. In the nearby city of Lod, there are about 7,950 recipients of benefits. (National Insurance Institute)

There is an immense lack of medical healthcare services in Ramla. Over 18,500 residents with a variety of disabilities in all nearby localities require medical, nursing and rehabilitation services.

Why Ramla?

Ramla is a mixed city, inhabited by Jews, Christians and Muslims. The concept of solidarity can be expressed through the center opening its gates to the entire population from the city as well as the surroundings.





Reducing Gaps

According to data from the Central Bureau of Statistics, although the prevalence of children with disabilities is more common in Arab society by a gap of about five percent (about 12.5% of Arab children compared to 7.9% among Jewish children), Jewish children with disabilities receive 1.5 times more rehabilitation and health services than Arab children.

The establishment of an Aleh Center in the city of Ramla symbolizes for us the ideal of reducing gaps in the fields of medical and rehabilitation care amongst all sectors in Israel, especially among children with disabilities from the Arab sector.

In addition to the recipients of Aleh's services who come from different backgrounds, Aleh strives to employ employees from all walks of life and from all ethnic groups. Aleh expresses what we have in common and what unites us – the value of helping and giving to others and the fact that we can live together and share common values.

The establishment of the Center in the city of Ramla will be a successful model of coexistence for other cities as well, and we hope that additional joint ventures will be established and will contribute to the strengthening of society in Israel.



Shortage of Beds

In the State of Israel, there is a total of about 25,000 beds, with an occupancy rate of 98%, and an annual need for an additional 1,000 beds.





Strengthening the Periphery

The Aleh Ramla Medical Rehabilitation Center that will be established in the city of Ramla will employ between 600-800 staff members from various fields: medical, nursing, paramedical professions and therapeutic professions.

This will change the map of regional employment and attract young couples with liberal professions to the area which will significantly strengthen the city, the surrounding areas and the population.

The Aleh Ramla Medical Rehabilitation Center will provide:



A nursing ward for young children

A complex nursing ward for children

A complex nursing ward for adults

Two rehabilitation wards



The Aleh Ramla Medical Rehabilitation Center will include a therapeutic pool, a Physiotherapy Institute, an Occupational Therapy Institute, clinical communication services and medical staff.

Accessible therapeutic gym



Stimulation rooms, computer rooms, music and Snoezelen



Special Education School and adapted library



Hydrotherapy Center and therapeutic pool



Virtual Reality Complex



Employment services for people with disabilities





Integration of employees with disabilities at the Aleh Ramla Medical Rehabilitation Center

Realization of the Vision

One of the main goals at Aleh is to provide equal opportunities for people with disabilities and to strive for their best integration into society and the world of employment. We intend to implement our vision in practice at the Aleh Ramla Medical Rehabilitation Center and integrate employees with disabilities in the various departments in accordance with their skills and job requirements.

This Aleh Ramla Medical Rehabilitation Center is a symbol of quality and excellence.

The Center is innovative in terms of construction, residential environment and treatment approaches.



Ground floor



A typical floor at the new Center



Creating a new environment



Total cost of the project: \$ 35,000,000

Approximate amount raised: \$ 23,500,000

Dimenstein Foundation: \$ 6,000,000

Aleh: \$ 6,000,000

Donations: \$ 2,800,000

Pool – National Insurance: \$ 750,000

Complex Nursing Ward – National Insurance: \$ 750,000

Additional government offices: \$ 7,200,000

**Aleh is in the process of raising
the balance of \$ 11,500,000
from foundations and bank loans**



Together, we will continue to create hope!



Aleh Ramla Rehabilitation Medical Center

Pinchas Street corner of HaRav Maimon,
Ramla, Israel

Contact person: Reuven Stern

Mobile: +972-53-3038424

e-mail: reuven@aleh.org

www.aleh.org